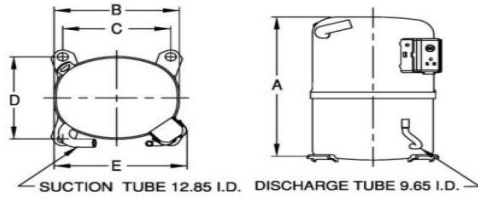




**PRINCIPAL DIMENSIONS - mm**

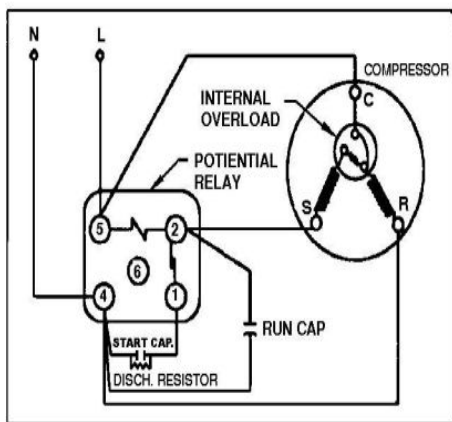


A: 289	B: 223	C: 191	D: 191	E: 239
--------	--------	--------	--------	--------

**SCHEMATIC WIRING DIAGRAM -**

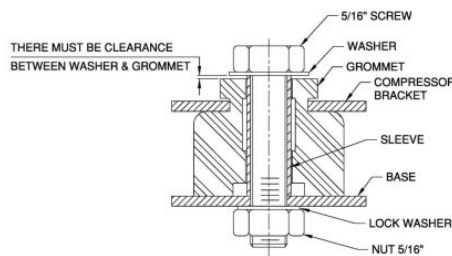
-

**SCHEMATIC WIRING DIAGRAM C.S.R.**



High Torque Start

**MOUNTING KIT**



Electrical : 220-240 V/50 Hz. 1 Phase

**Nominal Performance**

Capacity	1,244 / - Watts
	4,245 / - BTU/Hr
	1,070 / - Kcal/Hr
Power Input	929 / - Watts
Locked Rotor Amps	32.00 / - Amps
Max Continuous Current	- / - Amps
Rated Load Amps	4.42 / - Amps
COP	1.34 / - Watts / Watts
EER	4.57 / - BTU/W-Hr

**Testing Conditions**

Condensing Temperature	54.40 °C	129.9 °F
Evaporating Temperature	-23.30 / - °C	-9.9 / - °F
Liquid Temperature	32.20 °C	90.0 °F
Return Gas Temperature	32.20 °C	90.0 °F
Ambient Temperature	32.20 °C	90.0 °F

**Application**

Evaporating Temp. Range	LBP	@ -40.00 ° C to -12.20 ° C (-40.0° F to 10.0° F)
	Heat Pump	- ° C to - ° C (-° F to -° F)
Refrigerant	R404A	
Refrigerant Flow Control	Capillary Tube	
Compressor Cooling	Fan	

**Compressor and Motor data**

Compressor Type	Reciprocating
Displacement	37.50 cc.
Oil Type	Polyolester Oil
Oil Charge	1,067 cc.
Motor Type	C.S.R. ; 2 Pole 2,850 / - r/m
Voltage Range	198-264/- Volts 50/- Hz.
Winding Resistance at 25 ° C	
Start	9.00 Ohms
Run	2.40 Ohms
Weight with Oil	25.23 Kg.
Weight with Oil and Accessories	25.37 Kg.

**Electrical Components**

**Motor Protector**

Type	Internal Overload
Model Number	KGE 656-6
Open / Close	105-115 / 80-58 ° C
1st Cycle trip at 25 ° C	37.00 Amps(main) 24.00 Amps(start)

**Motor Starter (CSR Only)**

Type	Potential Relay
Model Number	KME 692-1 (RVA8R6D)
Pick Up (max.)	323.00-352.00 Volts
Drop Out (min.)	75.00-180.00 Volts
Terminal Cover	KGM 901-3
Start Capacitor (CSR Only)	108-130 µF 330 VAC.
Disch Resistor for Start Cap	15000 Ohms 2 w
Run Capacitor	15 µF 370/440 VAC.

**Mounting Kit**

Rubber Grommet	KGM 905-2
Sleeve Grommet	KGM 903-2
Washer	-

Since we are constantly improving our product , the specification are subject to change without notice.

REV. DATE	C / N No.
09-01-14	0486/13

**Certificate Marks**

