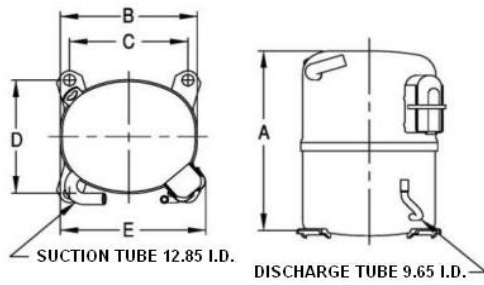


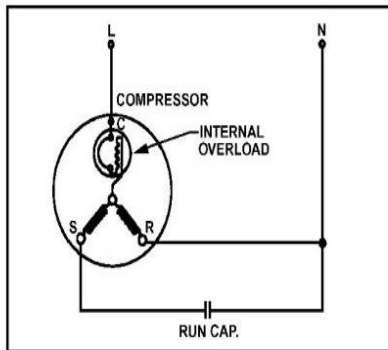


**PRINCIPAL DIMENSIONS - mm**



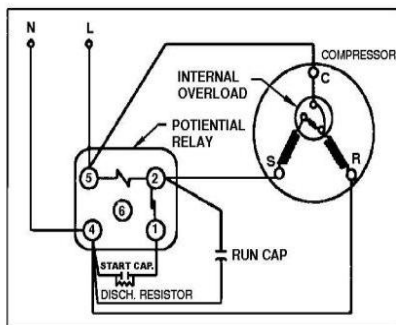
A: 289	B: 223	C: 191	D: 191	E: 239
--------	--------	--------	--------	--------

**SCHEMATIC WIRING DIAGRAM P.S.C.**



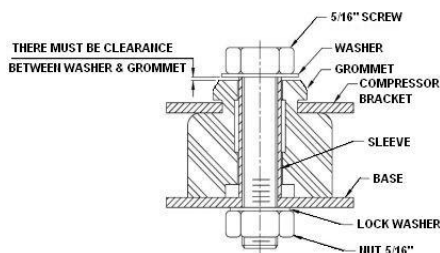
Option for Low Torque Only

**SCHEMATIC WIRING DIAGRAM C.S.R.**



High Torque Start

**MOUNTING KIT**



Electrical : 220-240 V/50 Hz. 1 Phase

**Nominal Performance**

Capacity	1,340 / 3,090 Watts
	4,572 / 10,543 BTU/Hr
	1,152 / 2,657 Kcal/Hr
Power Input	742 / 1,051 Watts
Locked Rotor Amps	50.48 / 50.48 Amps
Max Continuous Current	- / - Amps
Rated Load Amps	3.94 / 5.21 Amps
COP	1.81 / 2.94 Watts / Watts
EER	6.16 / 10.03 BTU/W-Hr

**Testing Conditions**

Condensing Temperature	54.40 °C	129.9 °F
Evaporating Temperature	-6.70 / 7.20 °C	19.9 / 45.0 °F
Liquid Temperature	46.10 °C	115.0 °F
Return Gas Temperature	35.00 °C	95.0 °F
Ambient Temperature	35.00 °C	95.0 °F

**Application**

Evaporating Temp. Range	MBP/HBP	@ -23.30 °C to 12.70 °C (-9.9° F to 54.9° F)
	Heat Pump	- °C to - °C (-° F to -° F)
Refrigerant	R134a	
Refrigerant Flow Control	Capillary Tube	
Compressor Cooling	Fan	

**Compressor and Motor data**

Compressor Type	Reciprocating
Displacement	35.60 cc.
Oil Type	Polyolester Oil
Oil Charge	1,050 cc.
Motor Type	C.S.R. ; 2 Pole 2,850 / 2,850 r/m
Voltage Range	198-264/- Volts 50/- Hz.
Winding Resistance at 25 °C	
Start	4.79 Ohms
Run	1.53 Ohms
Weight with Oil	25.47 Kg.
Weight with Oil and Accessories	25.78 Kg.

**Electrical Components**

**Motor Protector**

Type	Internal Overload
Model Number	KGE 656-1
Open / Close	110-120 / 78-60 °C
1st Cycle trip at 25 °C	45.00 Amps(main) 25.00 Amps(start)

**Motor Starter**

Type	Potential Relay
Model Number	KGE 681-3 (RVA3H6D)
Pick Up (max.)	190.00-215.00 Volts
Drop Out (min.)	40.00-105.00 Volts
Terminal Cover	KGM 901-2
Start Capacitor	88-106 µF 330 VAC.
Disch Resistor for Start Cap	15000 Ohms 2 w
Run Capacitor	30 µF 370/440 VAC.

**Mounting Kit**

Rubber Grommet	KGM 905-2
Sleeve Grommet	KGM 903-2
Washer	-

Since we are constantly improving our product , the specification are subject to change without notice.

REV. DATE  
01-04-14

C / N No.  
0515/13

**Certificate Marks**

