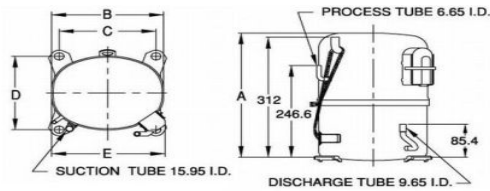




PRINCIPAL DIMENSIONS - mm

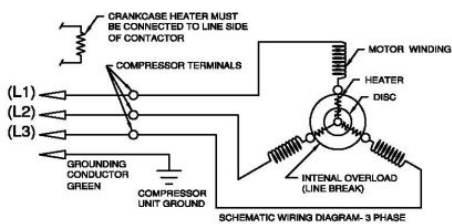


A: 324	B: 223	C: 191	D: 191	E: 239
--------	--------	--------	--------	--------

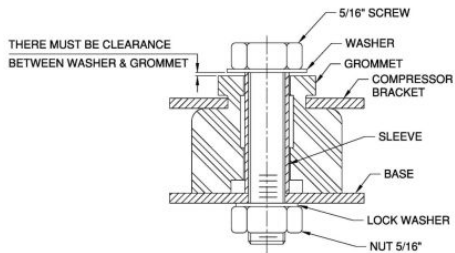
SCHEMATIC WIRING DIAGRAM -

-

SCHEMATIC WIRING DIAGRAM 3 PHASE



MOUNTING KIT



Electrical : 380-420 V/50 Hz., 460 V/60 Hz. 3 Phase

Nominal Performance

Capacity	5,802 / 6,909 Watts
	19,796 / 23,574 BTU/Hr
	4,989 / 5,941 Kcal/Hr
Power Input	1,918 / 2,278 Watts
Locked Rotor Amps	24.00 / 24.00 Amps
Max Continuous Current	- / - Amps
Rated Load Amps	3.25 / 3.20 Amps
COP	3.03 / 3.03 Watts / Watts
EER	10.32 / 10.35 BTU/W-Hr

Testing Conditions

Condensing Temperature	54.40 °C	129.9 °F
Evaporating Temperature	7.20 / - °C	45.0 / - °F
Liquid Temperature	46.10 °C	115.0 °F
Return Gas Temperature	35.00 °C	95.0 °F
Ambient Temperature	35.00 °C	95.0 °F

Application

Evaporating Temp. Range	HBP, A/C	@ 0.00 °C to 13.00 °C (32.0° F to 55.4° F)
	Heat Pump	- °C to - °C (-° F to -° F)
Refrigerant	R22	
Refrigerant Flow Control	Capillary Tube	
Compressor Cooling	Fan	

Compressor and Motor data

Compressor Type	Reciprocating
Displacement	43.10 cc.
Oil Type	Mineral Oil
Oil Charge	964 cc.
Motor Type	3 PHASE ; 2 Pole 2,850 / 3,450 r/m
Voltage Range	342-462/414-506 Volts 50/60 Hz.
Winding Resistance at 25 °C	
L1-L2	6.14 Ohms
L1-L3	6.70 Ohms
L2-L3	6.36 Ohms
Weight with Oil	27.66 Kg.
Weight with Oil and Accessories	27.86 Kg.

Electrical Components

Motor Protector	
Type	Internal Overload
Model Number	KGE 658-2
Open / Close	105-115 / 52-70 °C
1st Cycle trip at 25 °C	- Amps(main) 19.00 Amps(start)
Motor Starter	
Type	-
Model Number	-
Pick Up (max.)	- Volts
Drop Out (min.)	- Volts
Terminal Cover	KGM 901-2
Start Capacitor	No µF No VAC.
Disch Resistor for Start Cap	-
Run Capacitor	No µF No VAC.

Mounting Kit

Rubber Grommet	KGM 905-2
Sleeve Grommet	KGM 903-2
Washer	-

Since we are constantly improving our product , the specification are subject to change without notice.

REV. DATE	C / N No.
09-01-14	0486/13

Certificate Marks



RoHS