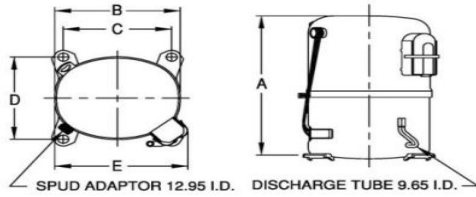




PRINCIPAL DIMENSIONS - mm

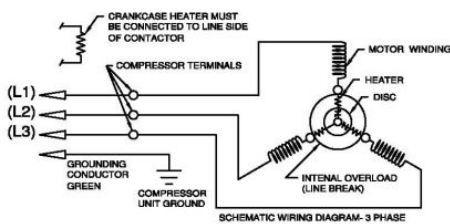


A: 324	B: 223	C: 191	D: 191	E: 239
--------	--------	--------	--------	--------

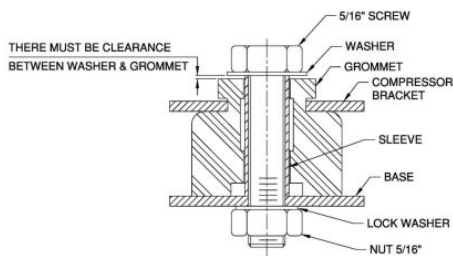
SCHEMATIC WIRING DIAGRAM -

-

SCHEMATIC WIRING DIAGRAM 3 PHASE



MOUNTING KIT



Electrical : 380-420 V/50 Hz., 460 V/60 Hz. 3 Phase

Nominal Performance

Capacity	7,440 / 9,086 Watts
	25,385 / 31,001 BTU/Hr
	6,398 / 7,813 Kcal/Hr
Power Input	2,520 / 3,030 Watts
Locked Rotor Amps	30.50 / 30.50 Amps
Max Continuous Current	- / - Amps
Rated Load Amps	4.40 / 4.40 Amps
COP	2.95 / 3.00 Watts / Watts
EER	10.07 / 10.23 BTU/W-Hr

Testing Conditions

Condensing Temperature	54.40 °C	129.9 °F
Evaporating Temperature	7.20 / - °C	45.0 / - °F
Liquid Temperature	46.10 °C	115.0 °F
Return Gas Temperature	35.00 °C	95.0 °F
Ambient Temperature	35.00 °C	95.0 °F

Application

Evaporating Temp. Range	HBP, A/C	@ 0.00 ° C to 13.00 ° C (32.0° F to 55.4° F)
	Heat Pump	- ° C to - ° C (-° F to -° F)
Refrigerant	R22	
Refrigerant Flow Control	Capillary Tube	
Compressor Cooling	Fan	

Compressor and Motor data

Compressor Type	Reciprocating
Displacement	53.50 cc.
Oil Type	Mineral Oil
Oil Charge	964 cc.
Motor Type	3 PHASE ; 2 Pole 2,850 / 3,450 r/m
Voltage Range	342-462/414-506 Volts 50/60 Hz.

Winding Resistance at 25 ° C

L1-L2	5.93 Ohms
L1-L3	6.04 Ohms
L2-L3	6.01 Ohms

Weight with Oil	27.64 Kg.
Weight with Oil and Accessories	29.33 Kg.

Electrical Components

Motor Protector	
Type	Internal Overload
Model Number	KGE 658-1
Open / Close	120-130 / 52-70 ° C
1st Cycle trip at 25 ° C	- Amps(main) 27.00 Amps(start)

Motor Starter	
Type	-
Model Number	-
Pick Up (max.)	- Volts
Drop Out (min.)	- Volts
Terminal Cover	KGM 901-2
Start Capacitor	No µF No VAC.
Disch Resistor for Start Cap	-
Run Capacitor	No µF No VAC.

Mounting Kit

Rubber Grommet	KGM 905
Sleeve Grommet	KGM 903-2
Washer	-

Since we are constantly improving our product , the specification are subject to change without notice.

REV. DATE	C / N No.
09-01-14	0486/13

Certificate Marks

COMPRESSOR PERFORMANCE TABLE