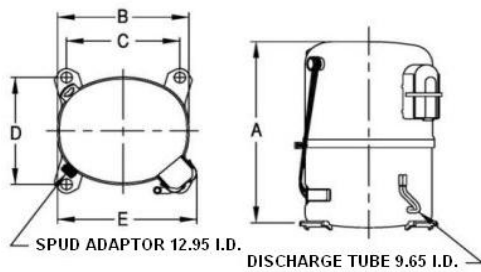


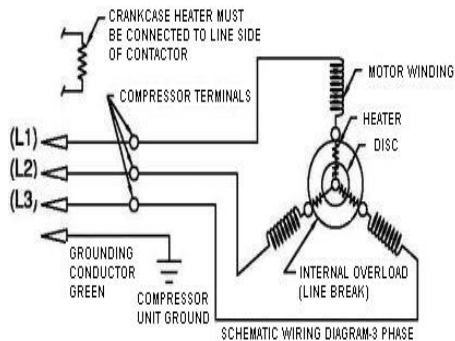


PRINCIPAL DIMENSIONS - mm



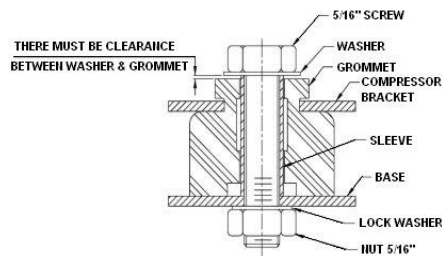
A: 324	B: 223	C: 191	D: 191	E: 239
--------	--------	--------	--------	--------

SCHEMATIC WIRING DIAGRAM 3 PHASE



SCHEMATIC WIRING DIAGRAM -

MOUNTING KIT



Electrical : 308-420 V/50 Hz., 460 V/60 Hz. 3 Phase

Nominal Performance

Capacity	10,390 / 12,515 Watts
	35,451 / 42,701 BTU/Hr
	8,934 / 10,761 Kcal/Hr
Power Input	3,625 / 4,440 Watts
Locked Rotor Amps	50.00 / 50.00 Amps
Max Continuous Current	- / - Amps
Rated Load Amps	7.30 / 7.40 Amps
COP	2.87 / 2.82 Watts / Watts
EER	9.78 / 9.62 BTU/W-Hr

Testing Conditions

Condensing Temperature	54.40 °C	129.9 °F
Evaporating Temperature	7.20 / - °C	45.0 / - °F
Liquid Temperature	46.10 °C	115.0 °F
Return Gas Temperature	35.00 °C	95.0 °F
Ambient Temperature	35.00 °C	95.0 °F

Application

Evaporating Temp. Range	HBP, A/C	@ 0.00 ° C to 13.00 ° C (32.0° F to 55.4° F)
	Heat Pump	- ° C to - ° C (-° F to -° F)
Refrigerant	R22	
Refrigerant Flow Control	Capillary Tube	
Compressor Cooling	Fan	

Compressor and Motor data

Compressor Type	Reciprocating
Displacement	71.00 cc.
Oil Type	Mineral Oil
Oil Charge	1,142 cc.
Motor Type	3 PHASE ; 2 Pole 2,850 / 3,500 r/m
Voltage Range	342-456/394-552 Volts 50/60 Hz.
Winding Resistance at 25 ° C	
L1-L2	2.74 Ohms
L1-L3	2.74 Ohms
L2-L3	2.72 Ohms
Weight with Oil	29.20 Kg.
Weight with Oil and Accessories	29.36 Kg.

Electrical Components

Motor Protector	
Type	Internal Overload
Model Number	4042KGE658-6
Open / Close	140-150 / 70-52 ° C
1st Cycle trip at 25 ° C	57.00 Amps(main) - Amps(start)

Motor Starter	
Type	-
Model Number	-
Pick Up (max.)	- Volts
Drop Out (min.)	- Volts
Terminal Cover	KGM 901-2
Start Capacitor	- µF - VAC.
Disch Resistor for Start Cap	-
Run Capacitor	- µF - VAC.

Mounting Kit

Rubber Grommet	4007KGM905-2
Sleeve Grommet	4023KGM903-2
Washer	-

Since we are constantly improving our product , the specification are subject to change without notice.

REV. DATE	C / N No.
15-06-15	0259/15

Certificate Marks

