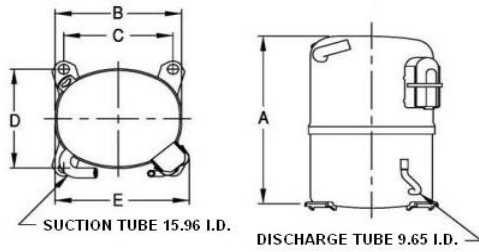


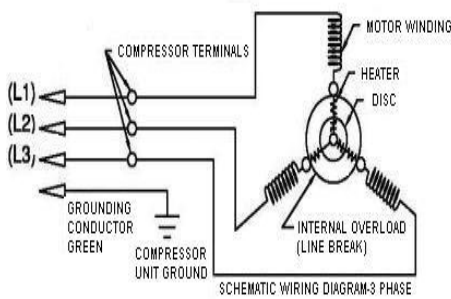


**PRINCIPAL DIMENSIONS - mm**



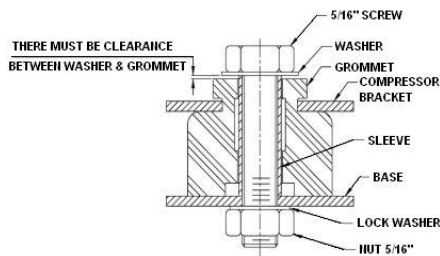
A: 324	B: 223	C: 191	D: 191	E: 239
--------	--------	--------	--------	--------

**SCHEMATIC WIRING DIAGRAM 3 PHASE**



**SCHEMATIC WIRING DIAGRAM -**

**MOUNTING KIT**



Electrical : 380-420 V/50 Hz., 460 V/60 Hz. 3 Phase

**Nominal Performance**

Capacity	4,038 / 4,736 Watts
	13,778 / 16,159 BTU/Hr
	3,472 / 4,072 Kcal/Hr
Power Input	2,353 / 2,778 Watts
Locked Rotor Amps	24.00 / 24.00 Amps
Max Continuous Current	- / - Amps
Rated Load Amps	3.80 / 3.70 Amps
COP	1.72 / 1.70 Watts / Watts
EER	5.86 / 5.82 BTU/W-Hr

**Testing Conditions**

Condensing Temperature	54.40 °C	129.9 °F
Evaporating Temperature	-6.70 / - °C	19.9 / - °F
Liquid Temperature	46.10 °C	115.0 °F
Return Gas Temperature	35.00 °C	95.0 °F
Ambient Temperature	35.00 °C	95.0 °F

**Application**

Evaporating Temp. Range	MBP	@ -23.30 °C to -1.10 °C (-9.9° F to 30.0° F)
	Heat Pump	- °C to - °C (-° F to -° F)
Refrigerant	R404A	
Refrigerant Flow Control	Capillary Tube	
Compressor Cooling	Fan	

**Compressor and Motor data**

Compressor Type	Reciprocating
Displacement	53.50 cc.
Oil Type	Polyolester Oil
Oil Charge	1,050 cc.
Motor Type	3 PHASE ; 2 Pole 2,850 / 3,500 r/m
Voltage Range	342-456/394-456 Volts 50/60 Hz.
Winding Resistance at 25 °C	
L1-L2	6.95 Ohms
L1-L3	6.95 Ohms
L2-L3	6.76 Ohms
Weight with Oil	28.26 Kg.
Weight with Oil and Accessories	28.46 Kg.

**Electrical Components**

<b>Motor Protector</b>	
Type	Internal Overload
Model Number	4042KGE658-2
Open / Close	110-115 / 52-70 °C
1st Cycle trip at 25 °C	19.00 Amps(main) - Amps(start)
<b>Motor Starter</b>	
Type	-
Model Number	-
Pick Up (max.)	- Volts
Drop Out (min.)	- Volts
Terminal Cover	KGM 901-2
Start Capacitor	- µF - VAC.
Disch Resistor for Start Cap	-
Run Capacitor	- µF - VAC.

**Mounting Kit**

Rubber Grommet	4007KGM905
Sleeve Grommet	4023KGM903-2
Washer	-

Since we are constantly improving our product , the specification are subject to change without notice.

REV. DATE	C / N No.
08-12-12	0603/12

**Certificate Marks**



**RoHS**