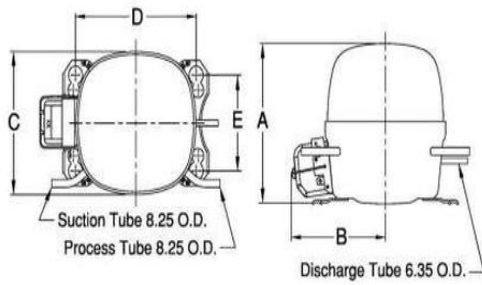


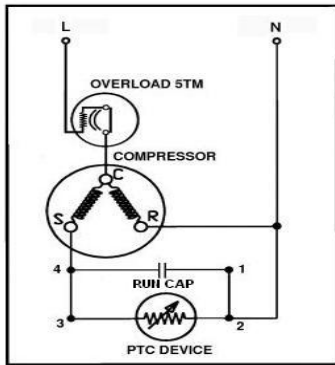


PRINCIPAL DIMENSIONS - mm



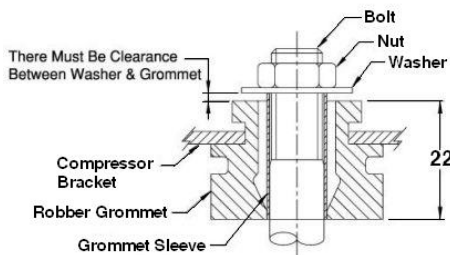
A: 180	B: 138	C: 159	D: 165	E: 102
--------	--------	--------	--------	--------

SCHEMATIC WIRING DIAGRAM R.S.C.R.



SCHEMATIC WIRING DIAGRAM -

MOUNTING KIT



Electrical : 220-240 V/50 Hz. 1 Phase

Nominal Performance

Capacity	148 / - Watts
	505 / - BTU/Hr
	127 / - Kcal/Hr
Power Input	104 / - Watts
Locked Rotor Amps	7.00 / - Amps
Max Continuous Current	- / - Amps
Rated Load Amps	0.50 / - Amps
COP	1.42 / - Watts / Watts
EER	4.86 / - BTU/W-Hr

Testing Conditions

Condensing Temperature	54.40 °C	129.9 °F
Evaporating Temperature	-23.30 / - °C	-9.9 / - °F
Liquid Temperature	32.20 °C	90.0 °F
Return Gas Temperature	32.20 °C	90.0 °F
Ambient Temperature	32.20 °C	90.0 °F

Application

Evaporating Temp. Range	LBP	@ -34.40 °C to -12.20 °C (-29.9° F to 10.0° F)
	Heat Pump	- °C to - °C (-° F to -° F)
Refrigerant	R134a	
Refrigerant Flow Control	Capillary Tube	
Compressor Cooling	Natural Convection	

Compressor and Motor data

Compressor Type	Reciprocating
Displacement	5.59 cc.
Oil Type	Polyolester Oil
Oil Charge	270 cc.
Motor Type	R.S.C.R. ; 2 Pole 2,880 / - r/m
Voltage Range	220-240/- Volts 50/- Hz.
Winding Resistance at 25 °C	
Start	31.56 Ohms
Run	18.90 Ohms
Weight with Oil	9.17 Kg.
Weight with Oil and Accessories	9.29 Kg.

Electrical Components

Motor Protector	
Type	External 5TM
Model Number	KME 670-12
Open / Close	100-110 / 70-52 °C
1st Cycle trip at 25 °C	- Amps(main) 6.60 Amps(start)
Motor Starter	
Type	PTC Relay
Model Number	KME 693-3
Pick Up (max.)	- Volts
Drop Out (min.)	- Volts
Terminal Cover	KMD 902-2
Start Capacitor	- μF - VAC.
Disch Resistor for Start Cap	-
Run Capacitor	3 μF 400 VAC.

Mounting Kit

Rubber Grommet	-
Sleeve Grommet	-
Washer	-

Since we are constantly improving our product , the specification are subject to change without notice.

REV. DATE C / N No.
31-05-14 0270/14

Certificate Marks



COMPRESSOR PERFORMANCE TABLE