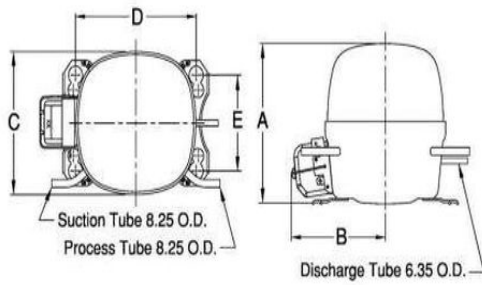


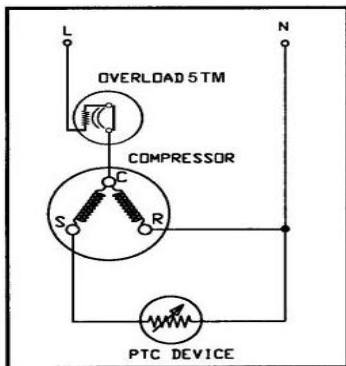


**PRINCIPAL DIMENSIONS - mm**



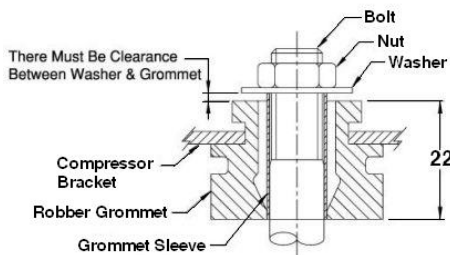
A: 178	B: 137	C: 155	D: 165	E: 102
--------	--------	--------	--------	--------

**SCHEMATIC WIRING DIAGRAM R.S.I.R.**



**SCHEMATIC WIRING DIAGRAM -**

**MOUNTING KIT**



Electrical : 220-240 V/50 Hz. 1 Phase

**Nominal Performance**

Capacity	170 / - Watts
	580 / - BTU/Hr
	146 / - Kcal/Hr
Power Input	142 / - Watts
Locked Rotor Amps	9.00 / - Amps
Max Continuous Current	- / - Amps
Rated Load Amps	1.20 / - Amps
COP	1.20 / - Watts / Watts
EER	4.08 / - BTU/W-Hr

**Testing Conditions**

Condensing Temperature	54.40 °C	129.9 °F
Evaporating Temperature	-23.30 / - °C	-9.9 / - °F
Liquid Temperature	32.20 °C	90.0 °F
Return Gas Temperature	32.20 °C	90.0 °F
Ambient Temperature	32.20 °C	90.0 °F

**Application**

Evaporating Temp. Range	LBP	@ -34.40 °C to -12.00 °C (-29.9° F to 10.4° F)
	Heat Pump	- °C to - °C (-° F to -° F)
Refrigerant	R134a	
Refrigerant Flow Control	Capillary Tube	
Compressor Cooling	Natural Convection	

**Compressor and Motor data**

Compressor Type	Reciprocating
Displacement	6.00 cc.
Oil Type	Polyolester Oil
Oil Charge	270 cc.
Motor Type	R.S.I.R. ; 2 Pole 2,880 / - r/m
Voltage Range	220-240/- Volts 50/- Hz.
Winding Resistance at 25 °C	
Start	21.42 Ohms
Run	15.91 Ohms
Weight with Oil	7.20 Kg.
Weight with Oil and Accessories	7.34 Kg.

**Electrical Components**

**Motor Protector**

Type	External 5TM
Model Number	KME 670-18
Open / Close	110-120 / 70-52 °C
1st Cycle trip at 25 °C	- Amps(main) 9.30 Amps(start)

**Motor Starter**

Type	PTC Relay
Model Number	KME 693-3 (PTH7M150MD2)
Pick Up (max.)	- Amps
Drop Out (min.)	- Amps
Terminal Cover	KMD 902-2
Start Capacitor	- µF - VAC.
Disch Resistor for Start Cap	-
Run Capacitor	- µF - VAC.

**Mounting Kit**

Rubber Grommet	KMD 905-3
Sleeve Grommet	KMD 903-2
Washer	KEB 387

Since we are constantly improving our product , the specification are subject to change without notice.

REV. DATE  
TCN 25-12-14

C / N No.  
TCN 0484/14

**Certificate Marks**

