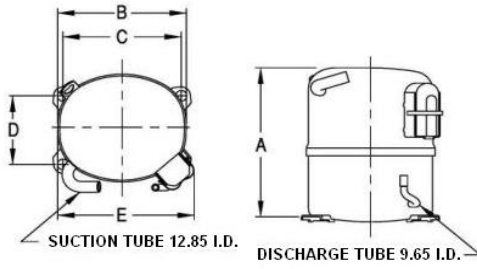


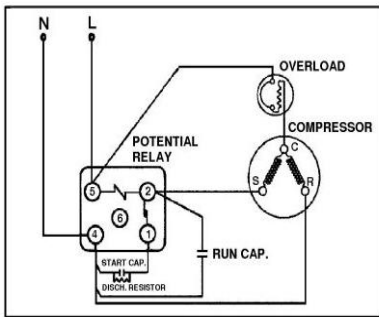


**PRINCIPAL DIMENSIONS - mm**



A: 264	B: 223	C: 203	D: 122	E: 239
--------	--------	--------	--------	--------

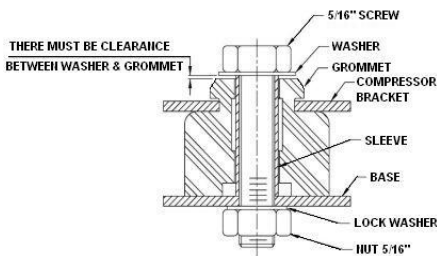
**SCHEMATIC WIRING DIAGRAM C.S.R.**



High Torque Start

**SCHEMATIC WIRING DIAGRAM -**

**MOUNTING KIT**



Electrical : 220-240 V/50 Hz. 1 Phase

**Nominal Performance**

Capacity	967 / - Watts
	3,299 / - BTU/Hr
	832 / - Kcal/Hr
Power Input	731 / - Watts
Locked Rotor Amps	30.00 / - Amps
Max Continuous Current	- / - Amps
Rated Load Amps	3.32 / - Amps
COP	1.32 / - Watts / Watts
EER	4.51 / - BTU/W-Hr

**Testing Conditions**

Condensing Temperature	54.40 °C	129.9 °F
Evaporating Temperature	-23.30 / - °C	-9.9 / - °F
Liquid Temperature	32.20 °C	90.0 °F
Return Gas Temperature	32.20 °C	90.0 °F
Ambient Temperature	32.20 °C	90.0 °F

**Application**

Evaporating Temp. Range	LBP	@ -35.00 ° C to -12.20 ° C (-31.0° F to 10.0° F)
	Heat Pump	- ° C to - ° C (-° F to -° F)
Refrigerant	R404A	
Refrigerant Flow Control	Capillary Tube	
Compressor Cooling	Fan	

**Compressor and Motor data**

Compressor Type	Reciprocating
Displacement	24.20 cc.
Oil Type	Polyolester Oil
Oil Charge	850 cc.
Motor Type	C.S.R. ; 2 Pole 2,850 / - r/m
Voltage Range	198-264/- Volts 50/- Hz.
Winding Resistance at 25 ° C	
Start	6.22 Ohms
Run	2.96 Ohms
Weight with Oil	21.66 Kg.
Weight with Oil and Accessories	22.40 Kg.

**Electrical Components**

**Motor Protector**

Type	External Overload 3/4"
Model Number	3KME664-18/CASY
Open / Close	115-125 / 70-52 ° C
1st Cycle trip at 25 ° C	22.00 Amps(main) - Amps(start)

**Motor Starter**

Type	Potential Relay
Model Number	4043KGE681-3 (RVA3H6D)
Pick Up (max.)	190.00-215.00 Volts
Drop Out (min.)	40.00-105.00 Volts
Terminal Cover	KGM 901-1
Start Capacitor	145-174 µF 330 VAC.
Disch Resistor for Start Cap	15000 Ohms 2W
Run Capacitor	25 µF 425 VAC.

**Mounting Kit**

Rubber Grommet	4007KGM905-2
Sleeve Grommet	4023KGM903-2
Washer	-

Since we are constantly improving our product , the specification are subject to change without notice.

REV. DATE	C / N No.
01-04-14	0515/13

**Certificate Marks**

